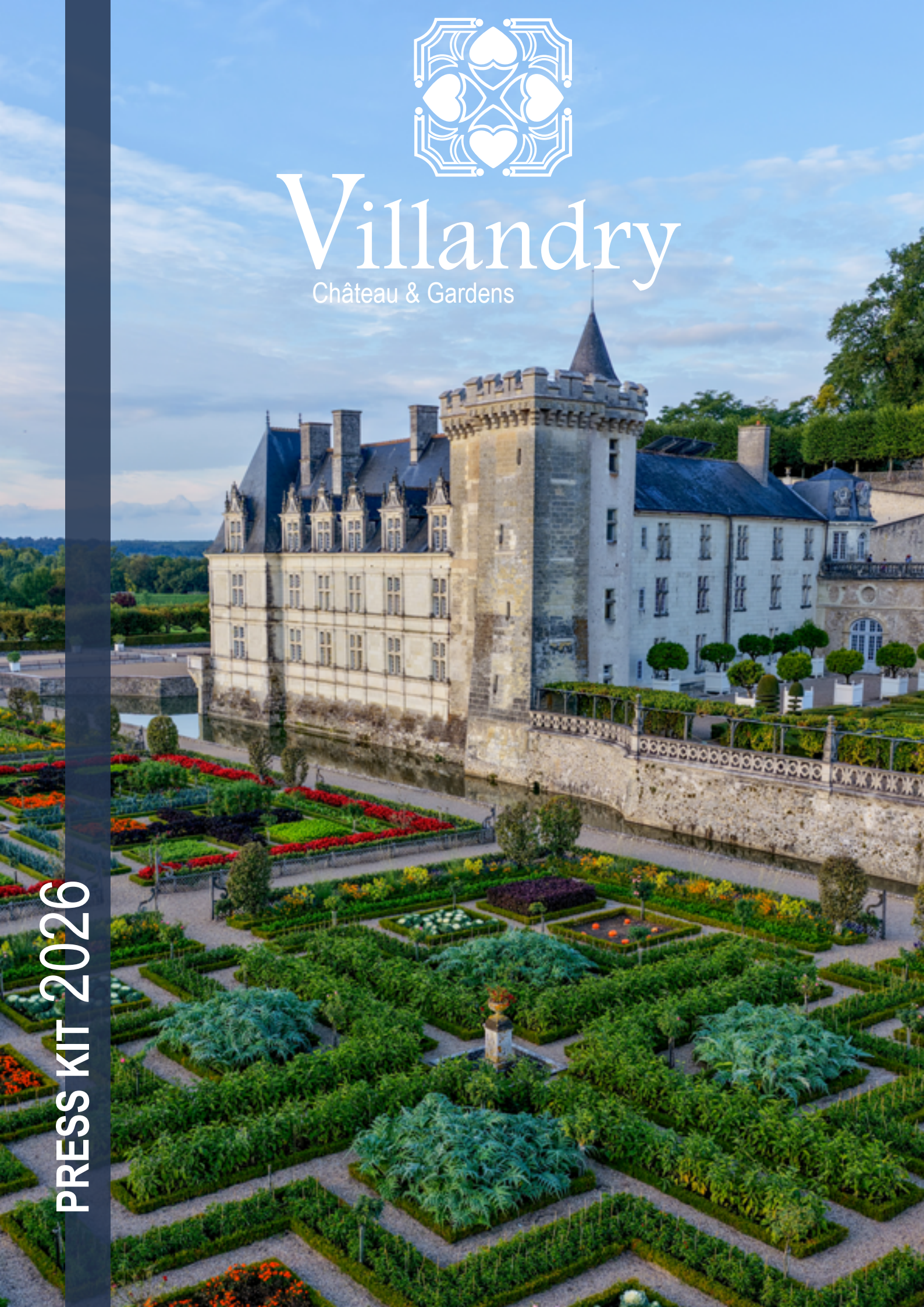
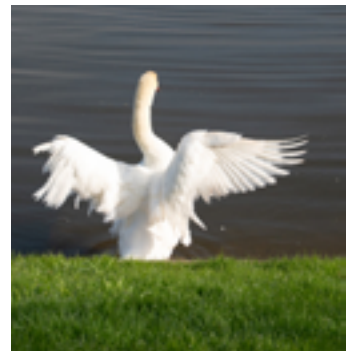


Villandry

Château & Gardens



PRESS KIT 2026



CONTENTS

VILLANDRY, CHÂTEAU AND GARDENS	2
Villandry, past and present	2
A family and friendly château	3
Evolution of the gardens over the centuries	5
Villandry's six gardens	6
Gardens, a living heritage	8
Villandry, a place to visit	12
RENDEZ-VOUS IN VILLANDRY	15
Calendar of events	15
Events	16
Exhibitions	20
PRESS AND FILMING	23
VISIT VILLANDRY	24
THE DOULCE TERRASSE	27

VILLANDRY, CHÂTEAU AND GARDENS



Villandry, past and present : the incredible story of a rebirth

In the Middle Ages

A fortress, whose tower still remains today, was built. It was here, in the keep, that the «Paix de Colombiers» have been signed in **1189**, in which **Henry II Plantagenet, King of England**, came before **the King of France, Philippe Auguste**, to admit his defeat.

During the Renaissance

Jean Breton, Finance minister under King Francis I, bought the estate in 1532 and, on the site of the old fortress, built a new château. The architectural style of the **Renaissance château** was a precursor of Anet and Fontainebleau and later became the Henri IV style.

From the Classical period to the 20th century

In the 18th century, the property came into the hands of the **comte Michel-Ange de Castellane** who wished to bring it up to the levels of comfort in vogue at the time and therefore had a number of modifications made to both the interior and the exterior.

The château remained in the family until the French Revolution, but then had a succession of owners from a wide range of horizons, such as the prince **Jérôme Bonaparte, Napoléon's brother**, and Pierre-Laurent

Hainguerlot. Some of them took little interest in its future, or indeed its upkeep.

At the same time, the gardens were also altered in line with the current trend for Romanticism: the Renaissance ornamental gardens were destroyed to **transform the whole estate into a large, English-style park.**



Joachim Carvallo and Ann Coleman in 1899 (USA)

Early in the 20th century

Everything changed in 1906. **Joachim Carvallo, of Spanish origin, and his American wife Ann Coleman** bought the estate. This marked a turning point, for them and for the château: Joachim and his wife gave up their career in science and devoted their life and their fortune to restoring the monument.

Joachim was a cultivated man, with a passion for botany, architecture and Spanish art. In the first few years, the couple concentrated on restoring the stones, and gradually the place recovered its soul... But very soon (in around 1908), Joachim Carvallo began to **restore the castle to its Renaissance style, which meant bringing back the Renaissance garden** in the place of the romantic English park. And so began the great adventure of restoring the grounds by recreating the four levels of terraces and each of the gardens: the decorative vegetable garden, the garden rooms and the water garden.

Today

Today their great-grand-son, Henri Carvallo, heads Villandry.



The château at the end of the 19th century



The dining room



The kitchen garden room

A family and friendly château...

Although Villandry owes its reputation to its incredible gardens, no visit is complete without a tour of the château.

The interiors of Jean Breton's Renaissance château were completely revamped by the comte de Castellane in the 18th century and kept this way by its subsequent owners.

There is a **warm and welcoming atmosphere** to this **family home**, which is now fully open to visitors. Explore its 15 rooms, including dining room, kitchen, study and bedrooms, all furnished with care and harmoniously decorated. They are further embellished with **bouquets of fresh flowers**, to the great delight of visitors.

In Villandry, you have to venture into the château to better understand the gardens. Created to be admired from above, these can be discovered from the windows of the château, with a constantly renewed point of view.

The visit of the interiors also gives access to the terrace of the medieval keep from where the view of the gardens and the Loire Valley is worth the ascent.

...with Hispanic tones

The Spanish paintings collection

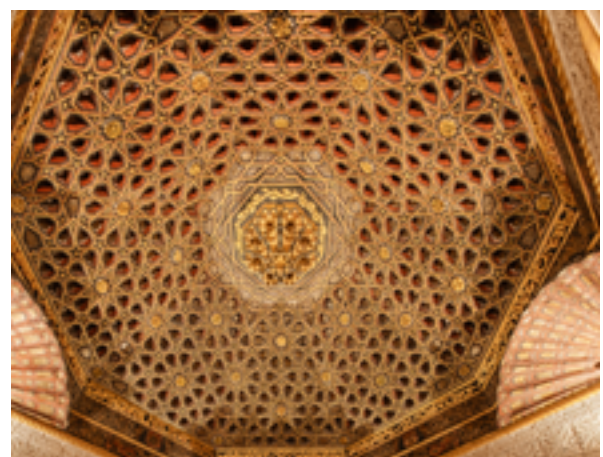
The chateau de Villandry presents a magnificent collection of mainly Spanish works dating from the 17th century, the golden age of Iberian painting. This collection was initially compiled by Joachim Carvallo. Incidentally, it was the scope

of this collection that made him decide to buy Villandry: he wanted to display his treasures there.

The current owner, Henri Carvallo, is keen to rebuild this collection by repurchasing works that were part of Joachim Carvallo and Ann Coleman's original collection.

The Moorish ceiling

Unexpected finds include the oriental drawing room, at the end of the gallery of Spanish paintings on the first floor. It has been fully restored, from the floor to the Mudéjar-style ceiling, which dates from the 15th century. Originally from a palace in Toledo, it is formed of 3,600 pieces of wood, all purchased and reassembled by Joachim Carvallo in the early 20th century.



The Moorish ceiling



The gardens over the centuries

The 16th century

This was when the Renaissance castle was built by **Jean Breton**. Thanks to archaeological digs, we know today that there was a decorative vegetable garden at the time, right next to the castle, such as those you can see in the illustrations of the *Plus Excellents bâtiments de France*, a work by Jacques Androuet du Cerceau, a brilliant Renaissance architect. This conviction was consolidated by an 18th century blueprint which proves **the existence of two terraces, one cultivated as a vegetable garden and the other as an ornamental garden.**



Plan of Villandry in the late 17th century

The 18th century

At this time, Villandry became the property of the **comte de Castellane** who, from 1760 onwards, **extended the gardens** begun in the 16th century. For this, he bought plots of land from the villagers extending right up to the church. He thus **created a fine classic French style garden**. A third level of terraces was added to the vegetable garden – situated between the church and the castle, and the ornamental garden. On this last terrace, he created a pond in the shape of a Louis XV looking glass.

The 19th century

The property then fell into the hands of **Pierre-Laurent Hainguerlot**, and the gardens underwent considerable change: they were **transformed into a romantic English style park**. This type of grounds became fashionable in the late 19th century under the impulse of the Romantic Movement, and required much less maintenance than a French style garden. It was presumably for both these reasons that the Hainguerlot family decided to change to a landscape of winding paths, curves and clusters of trees and shrubs.



The ornamental garden in the end of the 19th century

Early 20th century

Between 1908 and 1918, the new owner of Villandry, Joachim Carvallo devoted himself to restoring the Renaissance gardens. The Renaissance castle, which he restored to its original beauty, should have the right gardens.

He therefore set about gathering the necessary information: first he led archaeological digs in the gardens and found the vestiges of base walls and pipes which enabled him to re-site the decorative vegetable garden. Then he consulted two important literary sources in particular: *Les Plus Excellents bâtiments de France* and the *Monasticon Gallicanum* which gave him an idea of what Renaissance gardens were like.

He also consulted old blueprints, like that of the comte de Castellane and the Napoleonic land registry, which helped him in his quest.

And today...

The gardens have once again been extended with **the creation of the Sun Garden in 2008**. This was created on a fourth terrace, from a sketch left by Joachim Carvallo.



The geometry of the decorative vegetable garden



The purple pigeon cabbages



Blooming tulips in the ornamental gardens

Six gardens in Villandry

There are a total of six gardens at Villandry. The Villandry gardens are laid out in a succession of four terraces, and each garden has its own strong identity and aesthetic principles:

At the lowest level is **THE DECORATIVE VEGETABLE GARDEN**, which has to feed the household, but not just in any old manner: it has to be quite simply magnificent as it is situated just next to the castle. Made up of nine squares of identical size but with different motifs inside, it covers an area of more than one hectare. There are two planting schemes per year: the spring scheme from March to June and the summer one from July to October.

Designed as an extension of the reception rooms on the ground floor of the chateau, **THE ORNAMENTAL GARDENS** are located on the second terrace. Planted with high boxwoods and flowers with symbolic motifs and colours, they form two green salons on either side of the moat.

Adjacent to the south façade of the chateau is the first salon, composed of the Garden of Crosses (Basque, Languedoc and Maltese) and the Love Garden, with its evocative squares (tender, passionate, fickle and tragic love). They are

home to the bright colours of the tulips in spring and the begonias in summer.

The second salon, with its stylised lyres and musical notes, is called the Music Room.

On the same level, **THE HERB GARDEN** is a utilitarian garden inherited from the Middle Ages. Today, around thirty aromatic and medicinal herbs are grown there.

THE WATER GARDEN, surrounding a fine pond intended to be the mirror reflecting the sky, is designed as a place for meditation. It is also a marvellous water reserve for watering the gardens.

THE MAZE, with its long, winding paths, but containing no difficult pitfalls, symbolises man progressing serenely and smoothly towards God. This type of maze is characteristic of Renaissance gardens.



In the sun garden, the cloud chamber



The water garden

On the fourth level, **THE SUN GARDEN** transports the visitor to a place that is both at odds with and in harmony with the other gardens. Eighty-five years after the completion of the gardens, Henri Carvallo entrusted the design of this modern garden to landscape architects Louis Benech and Alix de Saint-Venant in 2008, based on the designs of Joachim Carvallo. In this garden, where the plants are arranged in a charming and skilful disorder, three universes stand out: the Cloud Chamber with its grassy paths, the Sun Chamber with its orange hues, and the Children's Chamber, a play area for the youngest visitors.

Villandry has the particularity of having one of the rare **LAWN TENNIS COURTS** in France. The old tennis court was renovated in the spring of 2010 in the pure Wimbledon style. The gardeners have once again shown proof of their skill and today you can admire an almost unique spot in France: a splendid «high tech» lawn tennis court, which

every month, is de-thatched, reseeded, mown and relined. In addition to the joy it gives to tennis players of all levels, the spot also reveals another aspect of the gardens: as a place for games and competition, with a sporting attitude to boot.

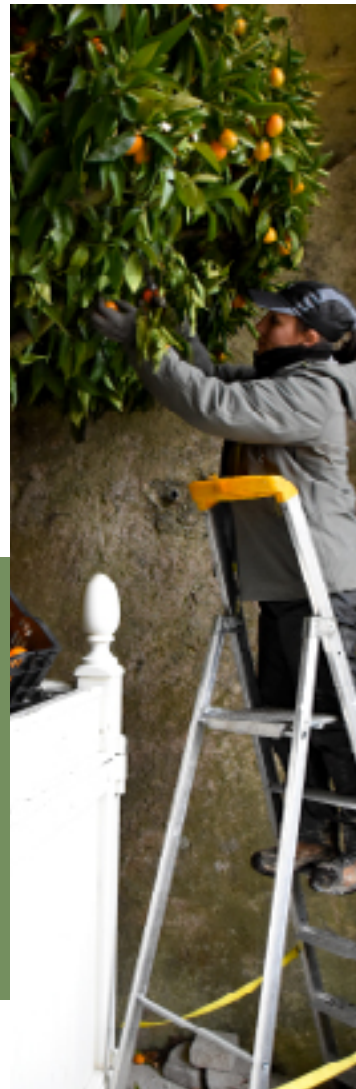
A FOREST overlooks the gardens to the east. A path allows you to cross it and explore the intricacies of the gardens from an elevated viewpoint. Until the 19th century, this hillside was planted with vines.

At the southern end of the gardens, near the Pavillon de l'Audience, are the Villandry **GREENHOUSES** where more than 60,000 flower and vegetable plants are nurtured each year before being planted.

The gardens, a living heritage

For more than a hundred years, the gardeners of Villandry have watched over a unique example of Renaissance-style gardens nestled in the heart of the Loire Valley. The passion for beauty and a job well done that so inspired their creator is still present in each member of the team today.

Like other art forms, garden architecture has never ceased to evolve, offering a variety of styles and designs, which today form a historical heritage in the heart of nature. Such heritage cannot be frozen in time in order to preserve, contemplate and pass on. Life is at the very heart of the garden. It emanates from the flora, fauna and water that flows through them, as well as from those who come to stroll through them. The landscaper and gardener work with nature, imagination, patience and constant renewal. The work is never finished, it is a constantly evolving creation.



Going organic in the gardens

Since more than 15 years, Villandry gambled on a move towards organic farming. A ban on the use of chemical insecticides and herbicides led the gardeners to rethink the way they worked, the tools they used and their methods of organisation. From fighting disease to withstanding unpredictable weather, managing gardens requires constant attention and an ability to regularly solve problems and come up with new ideas. Balancing heritage preservation, modern day concerns and biodiversity management, the maintenance of the gardens at Villandry is a year-round challenge.

A few concrete examples of what has been done in the gardens :

Stop pesticides

In the face of pests, auxiliaries (parasitoids, predators, or nematodes) are introduced to replace chemical insecticides. Since the implementation of these new practices, many insects have returned to the vegetable garden. Many natural enemies of aphids or cabbage flies, for example, are now present and lead the counterattack on their own.

The natural fungicides

In order to combat foliage diseases caused by fungi, the natural defences of roses, vines and fruit trees are boosted with treatments based on mineral elements, trace elements, essential oils, manure and decoctions. Only boxwoods require chemical fungicide treatment to combat potential diseases, as no biological alternative currently exists. This



is why we have decided to gradually replace all of the boxwoods with a resistant species so that they no longer need to be treated.

The organic fertilization

Chemical fertilisation has been replaced by organic fertilisation, in the form of compost comprising a variety of granules supplying nitrogen, phosphorous and potassium.

To accompany this new practice, several changes have also been made. Multi-tined spades are now used to preserve the activity of the bacteria contained in the soil and avoids, unlike a conventional spade, burying this microscopic life. On the other hand, hoeing is more frequent in order to make watering more efficient

The weeding

The whole site is weeded traditionally with tools such as wheel-mounted hoes and harrows... and some very patient gardeners!

For lawns: scarification removes straggly growth and the use of Verti-drain aerates the soil, improving the quality of the lawns and encouraging faster growth without chemical treatment.

The green waste management is outsourced to a specialised company which has a composting centre.

Gardeners at work

Visiting the gardens of Villandry is meeting and seeing the gardeners at work, and learning about their expertise. There's greenhouse work for preparing seeds, soil preparation, planting, hoeing, weeding, mowing the lawns, pruning the yew, topiary and lime trees, harvesting, equipment maintenance and more.

At Villandry, the seasons are every bit as active as the gardeners! The wide variety of garden styles and tasks means that everyone can be versatile and this brings a real sense of teamwork to maintaining and preserving this heritage.

The box tree question

Planted by Joachim Carvallo over a hundred years ago, the box tree is a fundamental aspect of Villandry. Easy to prune, its evergreen foliage makes it a guardian of the gardens, maintaining the emblematic lines and motifs season after season.

As with any plant, box is affected by variations in weather, disease and more, and while the plants at Villandry are very resistant, **the chateau's owner, Henri Carvallo, has decided to take preventive measures by gradually replacing the box trees.**

The first campaign began almost ten years ago, replanting 5 of the 9 beds in the Ornamental Kitchen Garden with *Faulkner Microphylla* box, a more resistant variety. Henri Carvallo remains very mindful, closely following scientific developments relating to box, particularly the work of the company Herplant in Belgium, in partnership with the University of Ghent. The latter has recently obtained a boxwood variety that is **resistant to fungal diseases through natural hybridisation**. Through close collaboration with these professionals, in November 2019 Villandry became the world's first historic garden to plant these new species of box.

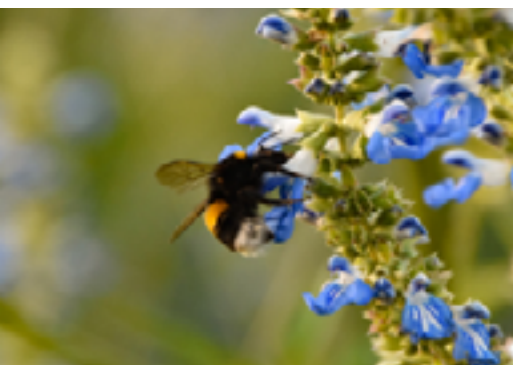
As smaller box trees are the most fragile, the gardeners at

Villandry first replaced those in the Herb and Sun Gardens. The boxwood pattern of the 9 squares of the vegetable garden have been completely replaced. It is painstaking work, given that each bed alone contains 8,000 plants. **In these three gardens, almost 100,000 box trees have been replanted.**

In the ornamental gardens, the box trees are taller and more robust. Nevertheless, **2022 marked the launch of a new progressive replacement campaign with the planting of larger individuals in these gardens, which continues in 2025.**

AND THE BOX TREE MOTH?

It is rare to talk about box, particularly in historic gardens, without mentioning the box tree moth. It causes no damage at Villandry, however, principally due to the heightened vigilance of the gardening team, which uses *Bacillus Thuringiensis* as a biological treatment. This bacteria is sprayed onto the foliage from March to October and is ingested by the caterpillar, putting an end to the life cycle and proliferation of these moths.



A haven for biodiversity

The birdsong, the buzzing of bees, these sounds make the walk more pleasant and testify to a welcoming home for wildlife.

Since the return of organic farming practices, biodiversity has flourished on the site and its surroundings. In addition to **essential microfauna**, nearly **90 species of birds**, for example, have been recorded. A colony of greater mouse-eared bats has also made the chateau's attic their summer home. These **bats** receive particular attention. Keen to preserve the fauna and flora of the site, Chateau de Villandry has been working with the Touraine LPO (League for the Protection of Birds), becoming an "LPO Refuge" in 2012.



Life in the chateau for the bees!

In the spring of 2021, **five beehives** were installed in the gardens of Villandry, on a terrace on the edge of the forest, by beekeeper Michael Preteseille (Le Rucher de la Dame Blanche).

While we are delighted to enjoy this exceptional honey and offer it for sale in the shop, our objective is not a commercial one. Animal well-being is at the heart of the beekeeper's concerns; only honey that the bees do not need is harvested. Michael Preteseille ensures his colonies live well with passion and patience. He has chosen to rear organically and only does so on sites that share his values. In a location where responsible farming practices have been in use for over ten years and where biodiversity flourishes, the association was obvious. The gardens of Villandry and the forest that borders them are a choice setting for the colonies. The variety of crops, from early spring to late autumn, provides a real larder for the bees.

The first harvests were promising and we are sure those that follow will be just as tasty, and that we will see thousands of bees foraging in the chateau gardens for a long time!

The gardens in a few figures

7 HECTARES OF GARDENS in the heart of a 15 hectares estate.

10 GARDENERS work full time to maintain the gardens; an apprentice Compagnon du devoir artisan completes the team. It is strengthened in the summer by interns to undertake, among other things, the manual weeding work.

115000 FLOWER AND VEGETABLE PLANTS are planted out in the vegetable garden or the gardens rooms. About half the plants are prepared by the gardeners in the castle glasshouses (seeds are sown and seedlings planted out, etc.)

30 KMS OF BOXWOOD are pruned twice a year; in May and August. About 300 hours are required just to prune the small box hedges in the kitchen gardens.

2 KM OF HORNBEAM form natural partitions, especially in the maze.

1016 LIME TREES spread all over the property are pruned every winter. This takes a team of four gardeners two months to complete, i.e. 1,100 hours of work, in addition to the 400 hours of work to prune the vines, roses bushes, pear and apple trees.

162 TOPIARY YEWS, pruned twice a year, in June for the first ornamental room, and in October for the second one.

144 PEAR TREES pruned into whips stand alongside more than 1km of apple trees pruned into cordons.

324 ROSEBUSHES, 21 different varieties, in the Vegetable Garden.

Villandry, a place to visit

With both historical and natural heritage, Villandry is a link between the past and the present, a moment frozen in time for visitors to explore. Opening up and sharing this heritage with the public is a mission that has guided its custodians for over a century.

Joachim Carvallo was a pioneer in opening private monuments to the public, opening his museum of ancient Spanish art to visitors in 1908 and then his garden in 1920. In 1924, imbued with the same spirit, this Spaniard with a French heart founded the “Demeure Historique”, an association which today brings together several thousand owners of private monuments. Anticipating the rise of cultural tourism, he worked to make it an instrument for the promotion and preservation of French heritage and its artistic wealth.

In 1934, the château and its gardens were classified as Historic Monuments (“Monument Historique”) In addition to this national heritage accolade, international recognition came with the classification of the Loire Valley as a **UNESCO World Heritage site** in 2000, with Villandry as one of the ambassadors.

Over the years, new rooms have been opened in the chateau and new activities and tools have been put in place to offer all visitors the best possible experience.

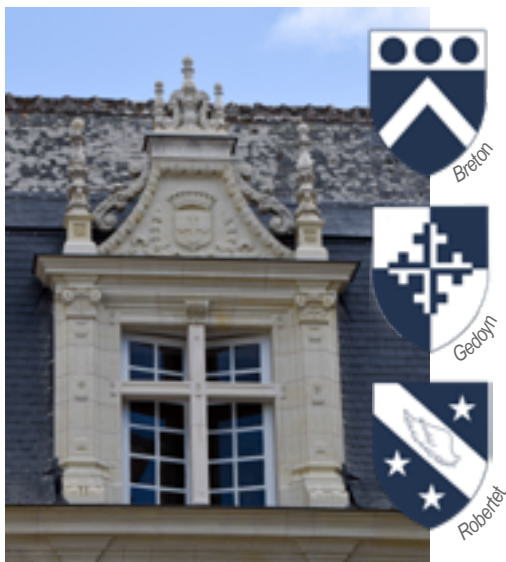
The quality of the site and the quality of the visit are at the heart of our concerns and have been recognised with the

award of various labels such as «Jardin Remarquable», «Refuge LPO», «Qualité Tourisme», «Loire à vélo», etc.

In 2025, the château and gardens of Villandry welcomed **370,000 visitors, including more than 40% from abroad.** 63% of these visitors from all over the world have walked through the rooms of the château, a proportion that grows a little more each year, testifying to the interest of this route and rewarding the efforts made to maintain and embellish the interior spaces.



Restore and maintain



Every year, restitution work, restoration projects and acquisitions are carried out to preserve the site, make it more attractive and improve the quality of the visit.

In 2026, the dormers

In line with the major work carried out by Joachim Carvallo in the early 20th century, his great grandson undertook **restoring the dormers of the wings of the château** between 1994 and 2004.

Twenty years later, those of the central body will in turn be restored.

This project will enable the sculpted coats of arms of three high-profile figures from the Renaissance in Villandry to be highlighted in particular: that of Jean Breton, who built the castle in the 16th century, that of his wife Anne Gedoyn and that of Florimond Robertet, his mentor and friend. In 2025, the central span (with Anne Gédoin's coats of arms) has been restored. In 2026, the project goes on with the two lateral spans (coats of arms of Jean Breton and Florimond Robertet).







RENDEZ-VOUS IN VILLANDRY

Events

Rendez-vous in the Gardens

Saturday 6 and Sunday 7 June

Guided tours, horse-drawn carriage rides ...

Discover Villandry's gardens in a different way.

Maison Rouillac Garden Party Auction

Friday 5th to Monday 8th June

Nights of Thousand Lights

Friday 31st July, Saturday 1st and Sunday 2nd August

Gardens lit by over 2,000 candles, activities, fireworks

European Heritage Days

Saturday 19 and Sunday 20 September

Meeting with master craftsmen and artists.

Vegetable Garden Days

Saturday 26 and Sunday 27 September

Come and meet Villandry's gardeners and enjoy activities as a family.

At Christsmas, Nature comes into the château !

From 28 November 2026 to 3 January 2027

Winter opening of the castle with decorations and entertainment

Exhibitions

This year, three exhibitions to discover during the visit to the château :

Les Toiles de Zenga, ***Silken Irises***

From mid-March to mid-June

Henri Peyre & Catherine Auguste

Trees

from mid-June to early September

Brigitte Chappaz et les brodeuses de Touraine,

The Ladies of Villandry

From mid-September to end October



Nights of Thousand Lights



European heritage days

THE EVENTS

National events or unmissable events in Villandry, the château and the gardens live to the rhythm of the entertainment throughout the season.

Saturday 6 and Sunday 7 June

Rendez-vous in the Gardens

Villandry is once again taking part in Meeting in the Gardens (*"Rendez-vous aux jardins"*), whose national theme is *"Jardins de pierres, pierres de jardin"*.

Aimed at highlighting France's many public and private parks and gardens, this event invites everyone to come and (re)discover the gardens and learn about the importance of maintaining and preserving this part of our heritage.

Activities will punctuate and enhance your visit throughout the weekend. Horse-drawn carriage rides, special guided tours and many other activities offer different opportunities to roam and appreciate the majesty of Villandry's gardens.

Usual rates. Without reservation.
Animations included in the entrance fee to the gardens.

Friday 5 to Monday 8 June

Garden Party de la Maison Rouillac

For the second year in a row, Villandry will host the Maison Rouillac «Garden Party», a must-see event for art lovers of all kinds. Exhibition open to the public and included in the entrance fee to the gardens.

Friday 31st July, Saturday 1st and Sunday 2nd August

Nights of Thousand Lights

As the day wanes and the gardens are adorned with light under the flames of more than 2,000 candles, this exceptional opening at night invites you to stroll and dream. The Night of Thousand Lights (*"Les Nuits des Mille Feux"*) will once again be the meeting place for lovers of beauty and poetry. Animations and a firework* will delight young and old.

The number of places being limited and the demand high, the purchase of tickets online, on the Château de Villandry website, is essential.

* Subject to prefectural authorization and weather conditions

€16 / €8

Limited capacity, online reservation required



Meeting in the gardens



Saturday 19 and Sunday 20 September

European Heritage Days

To celebrate European Heritage Days (*“Les Journées Européennes du Patrimoine”*), the Château de Villandry is showcasing the region’s artistic craftsmen.

Interior decorators and decorative painters, stone masons and cabinetmakers... many craftsmen have kept old skills and techniques alive, passing on their knowledge as guarantors of the preservation and conservation of our heritage.

During their visit to the château, visitors will be able to meet these artistic craftsmen, talk to them and discover the trades and expertise they have preserved. Visitors can even try their hand at some of the techniques!

To enhance these two days, guided tours of the gardens along with horse-drawn carriage rides will also be offered to

Reduced rates

Animations included in the entrance fee of the château

Saturday 26 and 27 September

Vegetable Garden Days

While the vegetable garden and the gardens are at their best, Villandry’s gardeners will go to meet visitors and share their know-how and tips with them. Novice or seasoned gardeners will no doubt leave with lots of ideas in their head and vegetables in their basket.

Some exhibitors will also present their products and creations inspired by the world of gardens: plants, local produce, decorations, gardening essentials... there will be something for everyone!-

The Vegetable Garden Days (*“Les Journées du Potager”*) will be an opportunity to have a fun family time, taking part in lots of activities and guided tours or strolling through the gardens.

Usual rates

Animations included in the entrance fee of the gardens

From 28 November 2026 to 3 January 2027

Closed on 25 December

At Christmas, Nature comes into the château!

Christmas magic in the land of châteaux

In the heart of the gardens, the Château de Villandry invites children and adults alike to spend Christmas in a family home with a warm and welcoming atmosphere. While each room is filled with a festive ambiance, nature comes into the château itself.

From the dining room to the bedrooms, as well as the kitchen where the Christmas festivities are prepared, it filters through the walls of the château in an extension of the gardens that give Villandry its unique aura. Reindeer, fawns, owls and squirrels...in the plant decorations designed for this occasion in the castle, the inhabitants are waiting for you to celebrate Christmas!

From the windows, you can admire the gardens, which have also put on their winter attire: mosaics of ornamental cabbages and leeks, box tree lacework and the outlines of yew tree topiary, and long avenues of sleepy lime trees that promise enchanting winter strolls.

NOËL AU PAYS
DES CHÂTEAUX

The Château de Villandry is participating in the "Christmas magic in the Land of Châteaux" operation alongside the Château d'Azay-le-Rideau, the Royal Château d'Amboise, the Château de Chenonceau, the Château de Langeais, the Royal Fortress of Chinon and the royal city of Loches.

• www.noelaupaysdeschateaux.com





EXHIBITIONS



www.les-toilesdezenga.com



Lacs de Charente - Henri Peyre & Catherine Auguste

21 March to 21 June

Silken Irises

Les Toiles de Zenga

«On backgrounds of solid colour, large areas of wild silk, Zenga lays precious lace. Black, white or coloured, fine or thick, simple or beaded. In this abundance of colours and materials emerge unknown giant flowers, imaginary plant universes, silvery nights, flower waves and luminous waterfalls.»

When designing an exhibition, I look to go beyond simply hanging my canvases. I like to tell a story. I like to create unexpected sensations among visitors, where images are superimposed in their minds on the images proposed by the works. And I like the connection to the place where the works are displayed.

I chose to present Villandry, so famous for its gardens, with a floral set of 12 canvases invaded by lace irises, at the height of the iris season. This choir of irises, which will be shown to the public for the very first time, will fully occupy the first room of the exhibition. In the second room, very different floral worlds will coexist, always owing to the grace of silk and lace. Silk is also very present in the furniture of the Château de Villandry. The exhibition will thus have a double echo with the chateau, through the flowers and through the silk.

Its title will be : **SILKEN IRISES**



26 June to 4 September

Trees **Henri Peyre and Catherine Auguste**

Henri Peyre and Catherine Auguste are former students of the École des Beaux-Arts de Paris, the former in painting, the latter in sculpture.

They have often worked together, and the Château de Villandry previously hosted an exhibition of joint work on still life in 2019. In it, the artists sought to produce photographs that would succeed in recovering the presence and aura of painting.

Research in this direction has continued, but the question now concerns the landscape: How to bring photographed landscapes closer to painting, when the photographer cannot directly intervene in them, as in still life?

The path taken involves seeking out classical painting compositions, found in selected landscapes, and directing the investigation towards landscapes that recall the human presence in their creation, even if in the resulting photographs, as in still life, man is absent and only suggested. Finally, it involves the choice of lights, which recalls the origins of the notion of landscape in painting, in a 17th-century France that was inspired in everything by theatre, the art that prevailed over all others at that time. Thus, chiaroscuro reigns supreme: the foregrounds are very present but always in shadow; the main stage, which is more illuminated, awaits its actors, while a bright light shines in the distance, a divine promise of a better world, which will always escape the observer, rejected in the darkness of the foregrounds.

www.photographie-peinture.com

15 September to end of October

The Ladies of Villandry **Brigitte Chappaz with Touraine's white embroiderers**

A passionate collector, for many years she has been patiently unearthing antique silks and lace, which she skilfully embroiders, creating motifs, large-scale tapestries, small tableaux or even bound books.

For this new exhibition at the Château de Villandry, she wanted to bring back to life members of the Carvalho family, navigating through the eras and creating her works from photographs or paintings, testimonies from different generations of a family established in Villandry since the beginning of the 20th century.

The exhibition will also feature many other pieces, such as beautiful dresses, highlighting the traditional art of Touraine embroidery.

The week following the European Heritage Days, embroidery demonstrations will be organised by Touraine's white embroiderers.





PRESS AND FILMING



At the crossroads of historical and natural heritage, the chateau and gardens of Villandry offer both an incredible setting and a variety of themes.

Requests for information or **visuals, organization of a shoot** (report, broadcast, fiction), request for **interviews**, etc. We are at your disposal to best meet your needs and support you in your projects.

In the "Press and Filming" section of our website, you can find at any time:

- The press kit for the current season
- All press releases to follow Villandry with its latest news
- A photo library

PRESS AND FILMING CONTACT:

Jérémy Licourt

jeremy.licourt@chateauvillandry.com

+33 (0)2 47 50 02 09



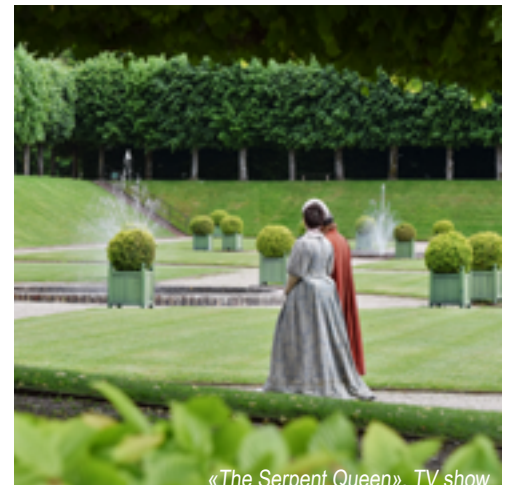
Photo shoot, Atout France



«Cuisine ouverte», TV programme, France TV



«Des Racines et des Ailes», TV programme, France TV



«The Serpent Queen», TV show

VISITING VILLANDRY

An ever-changing spectacle... Villandry's appearance changes with the seasons and the time of day. From April to October, the gardens are in full bloom and at their most colourful, but the beautiful winter days can be just as spectacular as the flamboyant lights of autumn or the soft colours of spring.

At the heart of this unique set of Renaissance gardens, let yourself be tempted by a visit to the château with its warm, family atmosphere... The windows and terrace of the tower offer incredible views of the gardens, which were designed to be admired from above.

Visit options

To help you best explore and enjoy the château and gardens of Villandry, discover its history and unravel its mysteries, several options are available:



VISITOR GUIDES FOR THE CHÂTEAU AND GARDENS to discover Villandry at your own pace.

*Plan around 2 hours to visit the chateau and gardens
French, English, German, Italian, Spanish, Dutch, Polish,
Portuguese, Japanese, Chinese, Russian and Czech
Français, anglais, allemand, italien, espagnol, néerlandais,
polonais, portugais, japonais, chinois, russe et tchèque*



AUDIO GUIDES FOR THE CHÂTEAU AND GARDENS are available for individual visitors and groups.

*Adults: French, English, German, Italian, Spanish, Brazilian,
Dutch, Russian
Children: French*



GUIDED TOURS OF THE CHÂTEAU are available for visitors from 15 March to 12 November 2025 (except Sundays and long weekend).

*Only in French – approximately 1 hr 15
Groups can enjoy guided tours in English
on reservation.*



The visit to the château begins with **AN 18-MINUTE FILM** played in a screening room. With the history of Villandry and an introduction to the gardens and interiors, enhanced with

stunning aerial views, this video perfectly complements the visit and provides an insight into the upper levels of the château for those unable to reach them.

In French – subtitles in French or English

Entrance fees 2026

	CHÂTEAU & GARDENS (2h minimum)	GARDENS ONLY (1h minimum)
ADULTS	14€	8,50€
YOUTH aged 8 to 18 years old and students -26, with up to date card	8€	5,50€
GROUPS 15 paying visitors min.	11€	7€

Free for children under 8 years old

To get there



Take the castles route!

Villandry is just 2 hours from Paris by car, 15 minutes from the castles of Azay-le Rideau and Langeais, and 40 minutes from the Château de Chenonceau!

From Paris

By car (240 Km): A10 junction 24 (Joué-lès-Tours) then A85, towards Saumur, junction 8 (Villandry)

By train: from Montparnasse station (55mn) then take a taxi from Tours or Saint-Pierre-des-Corps station (20mn)

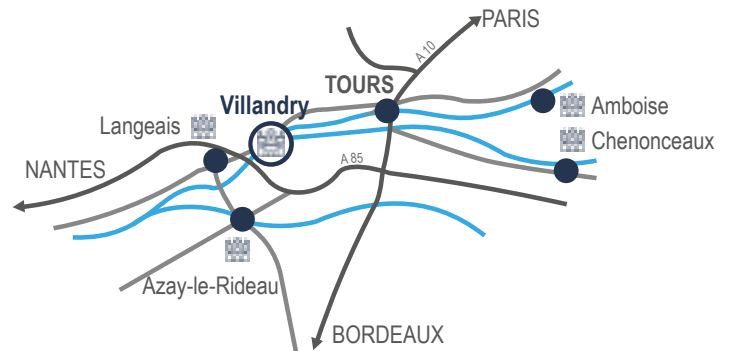
From Tours

By public transport : the «Fil Bleu» shuttle (www.filbleu.fr)

From Nantes

By car: A11 then A85 junction (Villandry)

By train: TER (90min) then take a taxi from Tours or Saint-Pierre-des-Corps station (20min)



P Cars, coaches, RVs, bikes... A **free parking area** close to the entrance to the site is available to all visitors.



by bike ! Follow the « Loire à Vélo » route (15 Km) from Tours

Opening times

THE CHÂTEAU

Open every day from 8 February to 11 November and from 29 November 2025 to 4 January 2026.

Last entry to the château 1/2h before closing

*Closed on 25 December

From 1 st to 4 January	09:30am-05:30pm
From 5 January to 6 February	Closed
From 7 to 28 February	09:00am-05:00pm
From 1 st to 31 March	09:00am-05:30pm
From 1 st April to 30 June	09:00am-06:00pm
From 1 st July to 31 August	09:00am-06:30pm
From 1 st September to 24 October	09:00am-06:00pm
From 25 October to 11 November	09:00am-05:00pm
From 12 to 27 November	Closed
From 28 November to 31 December*	09:30am-05:30pm

THE GARDENS

Gardens are open every day, all year round*.

*Closed on 25 December

** Last ticket sold

From 1 st to 4 January	09:30am-05:30pm**
From 5 January to 6 February	09:00am-05:00pm**
From 7 to 28 February	09:00am-05:30pm**
From 1 st to 31 March	09:00am-06:00pm**
From 1 st April to 30 September	09:00am-07:00pm**
From 1 st to 24 October	09:00am-06:30pm**
Du 25 octobre au 11 novembre	09:00am-05:30pm**
From 12 to 27 November	09:00am-05:00pm**
From 28 November to 31 December*	09:30am-05:30pm**



THE DOULCE TERRASSE

Restaurant and tea room

Ideally located at the entrance to the château, the La Douce Terrasse restaurant offers seasonal cuisine, inspired by the château's vegetable garden. The entire menu is made with regional products accompanied by wines from the Loire Valley for a convivial table.

To be enjoyed on the terrace or inside, the menus and à la carte dishes evolve to the rhythm of the seasons and vegetables from the vegetable garden: seasonal starters, meat, fish or vegetarian dishes, cheese plates and desserts...

Located next to the restaurant, just before the ticket office, a takeaway kiosk also offers traditional and original sandwiches, pancakes and cold or hot drinks, as well as a wide range of artisanal ice creams with surprising flavors of fruit and flowers.



The Pressoir

Located in the chateau's old wine pressing room, this friendly, unusual space offers hot and cold drinks, light meals and local specialities.

The restaurant is open during the day, from 1st April to 11 November 2026

Informations and booking : +33 (0)2 47 50 02 10 / restaurantladoulceterrasse@gmail.com



Space rental and catering

Seminars, group meals, receptions, tastings...

At the heart of the gardens, the Douce Terrasse teams are available to professionals and individuals alike to create tailor-made services.

Menus and quotes on request

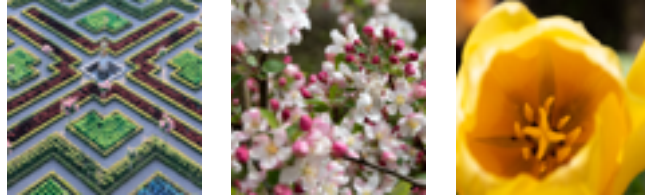
Contact: Emmanuelle Roublin, restaurant manager

+33 (0)2 47 50 02 10

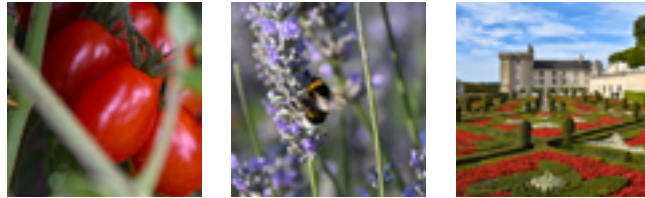
restaurantladoulceterrasse@gmail.com



Spring



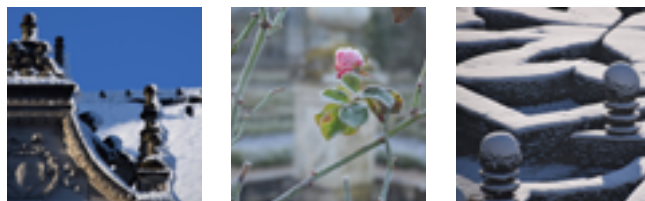
Summer



Autumn



Winter



**FOLLOW US ON SOCIAL MEDIA AND EXPERIENCE
VILLANDRY THROUGHOUT THE SEASONS!**

@chateauvillandry



Photo Credits: © Pierrez Loizeau : cover - © Antoine Bonin : p.3 - © Ludovic Chabert - CRT Centre-Val de Loire : p.26 - © Château et Jardins de Villandry : p.1, p.4, p.6, p.7, p.8, p.9, p.10, p.11, p.12, p.17, p.19, p.23, p.27, p.28 - Archives : p.2, p.5, p.13 - © Joël Klinger : p.16 - © J.gillard T.Vincent : p.6 © Frédéric Paillet : p.14 © ADT Touraine - Jean-Christophe Coutand : p.18 - © Zenga : p.20 - © Henri Peyre & Catherine Auguste : p.20

